



eurologik®

Discover the leading high-performance,
sustainable window system



All together better



eurologik®

A PROFILE SYSTEM DESIGNED FOR ENHANCED
AESTHETICS AND EASE OF FABRICATION

The Eurologik profile system from Eurocell combines leading energy efficiency performance and aesthetics with ease of use – for the ultimate system

The Eurologik profile system combines leading energy efficiency performance and aesthetics with ease of use, for the ultimate system. Eurologik is specially designed for ease and speed of fabrication and fitting, featuring a unique, patented knock-in bead system. Ideally suited for new build or replacement windows, its 70mm front-to-back dimension enables the seamless replacement of timber frames.

Eurologik is designed for improved aesthetics and clean sight lines, with its unobtrusive gasket line and slim profile. The profile features multiple chambers to enhance thermal efficiency and

strength, and improve drainage. Available with chamfered or sculptured ovolo styles in a range of colours, Eurologik window profiles add a touch of distinction to any home.

The sustainable option

Eurologik features post-consumer recycled PVC-U in the central core of the profile with 100% virgin PVC-U external faces. This ensures the same aesthetics and technical performance but with more environmentally responsible benefits for today's discerning customers. It offers the same benefits but with more sustainability – at no extra cost to you.

WHY CHOOSE EUROLOGIK?



**Outstanding
technical performance**



**Fast, accurate
fabrication and
installation**



**Superb energy
efficiency performance**



**U-values as
low as 0.8**



**BBA certified
system**



**Market-leading
sustainability**



**Wide range of colour
and style options**



**10-year
guarantee for
peace of mind**

Leading energy efficiency

Maximising the thermal performance of windows is vital to meet rising regulatory and customer demands. The advanced multi-chambered design of the main Eurologik profiles (including the optional six-chamber slim outer frame system) and innovative PVC-U Thermal Inserts work together to lock in heat. This means our 'A+'-rated windows offer market-leading double-glazed unit performance and value.

Exceptional air tightness and weathering performance

The post co-extruded (PCE) gaskets on Eurologik profiles use a specially developed compound and twin-leg profile connection system with one-way support arm. This provides excellent adhesion to the main profiles. Tested to BS6375, the gasket system achieves outstanding air tightness and weathering performance, improving energy efficiency further by minimising air leakage.

eurologik products available

Casement windows

Tilt and turn windows

French windows

Residential doors

French doors



ADVANCED PERFORMANCE

LEADING TECHNICAL & SUSTAINABILITY PERFORMANCE

Enhanced aesthetics for a brighter outlook...

Not only does the innovative six-chambered outer frame option perform better than standard 70mm window profiles, it looks better too. Slimmer than standard systems, it gives any window a sleek, contemporary appearance, increasing the area of glass for improved sight lines and brighter interiors.

... at no extra cost

What makes the slim, six-chambered outer frame so special is that it costs no more than the standard Eurologik outer frame. So now there's no cost barrier to installing the highest energy efficiency-rated profiles – every time.

A++ performance

A+ Window Energy Ratings (WER) are achievable with Eurologik – offering market-leading window performance using argon gas. Eurologik is capable of an A+13 rating (double-glazed) and an A++20 rating (triple-glazed). What's more, U-values as low as 1.2 can be achieved with a double-glazed unit and 0.8 with a triple-glazed unit.

PVC-U Thermal Inserts

PVC-U Thermal Inserts for Eurologik profiles are the sustainable way to improve your window energy efficiency. The multi-chambered design delivers significantly improved thermal performance, more efficient fabrication and 20% lighter weight than windows with conventional steel reinforcements.

Quality controlled manufacturing

Quality is carefully controlled and monitored throughout the manufacturing process of the Eurologik profile system. We have our own toolmaking and laminating facilities, manufacture in our own PVC-U compound mixing plant, giving us full control over product quality and consistency – right from the start.

High-performance products

Exposed to the elements, windows need to be hard-wearing, weather resistant and long lasting. The Eurologik window system will enable you to meet and exceed all of these requirements.

Up to 10-year guarantee

Eurologik profiles are guaranteed for ten years against warping, cracking and discolouration. That means you can give your customers the assurance of a robust, well-designed, precision-made product that's built to last.

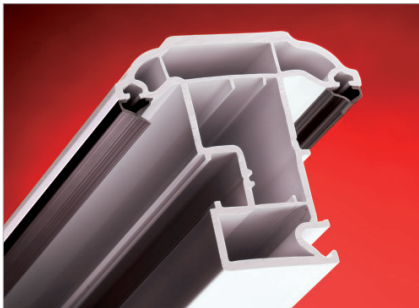


DID YOU KNOW?

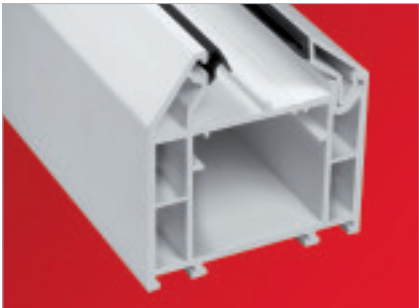
PVC-U can be recycled up to 10 times without any degradation in quality. This means that a piece of Eurologik profile can be used for up to 350 years!



MARKET-LEADING FEATURES



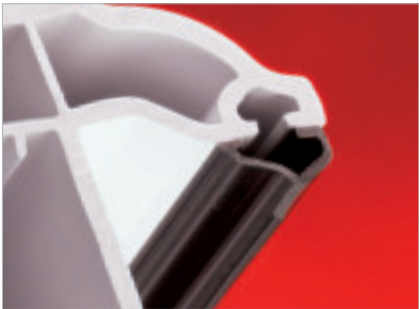
Full depth eurogroove for maximum hardware compatibility



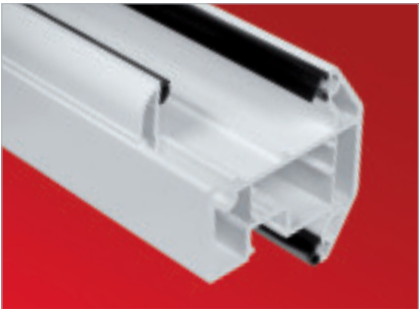
Soft line bevel feature is matched by the bead



Single hinge and espagnolette location in sashes for ease of fabrication



PCE gaskets offer market leading adhesion, air tightness and weather performance



Unique patented knock-in bead system available with 28mm and 36mm putty line



Assessment report numbers 2480 (chamfered) and 2663 (ovolo)



FABRICATION

FAST, EFFICIENT AND CONSISTENT

Why fabricate with Eurologik?

At Eurocell, we understand the demands of your business and Eurologik is purpose designed to make fabrication quick, simple and economical - with absolutely no compromise on quality or performance.

Eurologik ensures your reputation remains as robust, watertight and reliable as the finished product you supply to your customers.

Choose Eurologik and you can rely on a proven, flexible profile solution that offers:

Strength and durability. A single steel reinforcement bar makes mainframes and transoms stronger and reduces flexing, while continuous reinforcement across all reverse butt-welded joints adds extra rigidity.

Ease and economy

A common glass size for all Eurologik internal and external glazed windows and doors makes ordering and fitting easier. Plus, pre-installed, low line gasketing speeds up fabrication and does away with the need to buy and maintain gasket stocks.

Low maintenance and easy care

When you fabricate with Eurologik, you know you're providing householders with attractive, durable windows and doors that require the minimum care and attention. Capillary grooving on all inward facing frames prevents water damage and the clean, internal rebates can be kept looking their best with nothing more than warm water and a mild detergent.

Independent certification

A BBA certificate of approval guarantees absolute security and peace of mind - for you and the installers you supply.

Why install Eurologik?

Eurologik isn't just the most advanced and sustainable PVC-U system you can fit. It's also a beautifully designed window and door system whose slim, fully bevelled profile and clean sight lines enhance properties of every type.

Available with chamfered or sculptured ovolo beads in a variety of colours, it allows for a full range of designs including casement windows, French windows, tilt and turn windows and French doors. Giving you - and your customers - one of the widest choices on the market.

Just some of the reasons Eurologik is a better choice:

A comprehensive range of ancillaries

Our extensive collection of ancillary products includes cills, angles, bay posts, extensions and adaptors. All designed to integrate with and emphasise the clean, stylish lines of your Eurologik window and door projects.

A wide choice of colours and finishes

Today's householders demand more in the way of options to complete their vision of the perfect home. With White, Cream, Slate Grey, Anthracite Grey, Golden Oak, Irish Oak* and White Ash* all available in the Eurologik range, you're perfectly placed to offer the choice they're looking for.

Improved drainage, thermal efficiency and strength

Our innovative six chamber design combines outstanding 'A+' rated thermal performance, low weight, super-efficient drainage and extraordinary strength in the slimmest of PVC-U profiles.

Versatility

Eurologik can be configured to accept both 28mm and 36mm glazing thicknesses according to the specifications and requirements of your project.

Peace of mind

Full BBA accreditation means you can recommend Eurologik to your customers with complete confidence it will perform at its best and look great for many years.

INSTALLATION

HAS NEVER BEEN SIMPLER





eurologik® WINDOW & DOOR SYSTEM

STYLE & COLOUR OPTIONS

Colours to frame the view

Like all Eurocell PVC-U products, the Eurologik window and door system comes with an exact colour-match guarantee. That means the colour is precisely matched to all Eurocell window, door, conservatory roof and roofline products, creating a co-ordinated, consistent look across any property.

Up to 10-year guarantee

Eurologik windows and doors are guaranteed for ten years, so you can give your customers the assurance of a robust, well-designed, precision-made product that's built to last – manufactured by the UK's leading PVC-U specialist.

FRAME STYLES



Chamfered



Ovolo



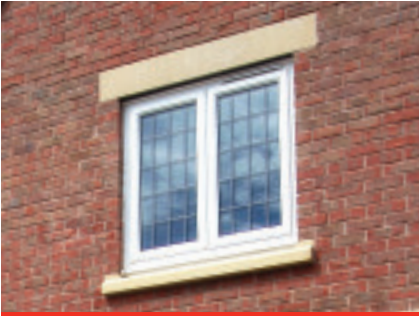
Casement windows – Anthracite Grey



Casement windows – Ovolo - Cream



Tilt and turn windows - Moondust Grey



French windows - White Ash



Residential doors



French doors

FRAME COLOURS



WHITE
White interior



WHITE ASH†
Both sides



CREAM
Cream interior



IRISH OAK†
White interior



IRISH OAK†
Both sides



GOLDEN OAK
White interior



GOLDEN OAK
Both sides



ROSEWOOD
White interior



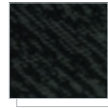
ROSEWOOD
Both sides



SLATE GREY*
White interior



ANTHRACITE GREY*
White interior



BLACK ASH*
White interior

ADDITIONAL COLOURS AND SPECIFICATIONS ARE
MADE TO ORDER ON EXTENDED LEAD TIMES

† Ovolo only * Chamfered only



A+ A++ A+++

↓CO₂



High Thermal efficiency



**Made from 100%
Recycled materials**

MAXIMUM ENERGY EFFICIENCY

FOR MINIMUM OUTLAY ON HEATING BILLS

Increasing demand for energy efficient windows

Delivering superior energy efficiency has never been more important for the construction industry and homeowners. It's an alarming fact that our homes and buildings are responsible for almost half of the UK's carbon dioxide emissions.

Windows have an important role to play in combating energy wastage, since 20% of the heat escaping from an average home is lost through its windows*.

*Source: Energy Saving Trust.

The green option you can afford

Eurocell Eurologik helps builders and homeowners to meet their environmental objectives - without having to pay a premium for going green. Fitting Eurocell PVC-U Thermal Inserts in Eurologik profiles to boost the thermal efficiency of your windows provides better value than steel alternatives. And they are made from 100% recycled material.

Plus you can use the Thermalogik outer frame system - part of the Eurologik family - which enables you to exceed the thermal efficiency requirements of the Building Regulations by 35%*.

THERMAL PERFORMANCE

SPECIFICATION COMPARISON



eurologik slim outer frame with PVC-U Thermal inserts reinforcements

Config	Glass 1 (external)	Glass 2	Glass 3 (internal)	Gas	Spacer bar	Reinforcing	WER	Energy Index	U-value
4/12/4/12/4	Pilkington Optiwhite	Pilkington K Glass S	Pilkington K Glass S	Argon	SuperSpacer Premium	Thermal Insert	A++	21	1.0
4/20/4	SG Diamant	N/A	SG Planitherm Total +	Argon	Swisspacer Ultimate	Thermal Insert	A+	13	1.3
4/20/4	Float	N/A	AGC Planibel A	Argon	Swisspacer Ultimate	Thermal Insert	A	3	1.5

eurologik standard outer frame with PVC-U Thermal inserts reinforcements

Config	Glass 1 (external)	Glass 2	Glass 3 (internal)	Gas	Spacer bar	Reinforcing	WER	Energy Index	U-value
4/12/4/12/4	SG Diamant	SG Planitherm Total +	SG Planitherm Total +	Argon	SuperSpacer Premium	Thermal Insert	A+	16	1.0
4/20/4	SG Planiclear	N/A	SG Planitherm Total +	Argon	Swisspacer Ultimate	Thermal Insert	A	5	1.3
4/20/4	Pilkington Optiwhite	N/A	Pilkington K Glass	Argon	SuperSpacer Premium	Thermal Insert	A	1	1.5
4/20/4	SG Planiclear	N/A	SG Planitherm Total +	Argon	Aluminium Spacer	Thermal Insert	B	-7	1.5
4/20/4	Float	N/A	Pilkington K Glass	Argon	SuperSpacer Premium	Thermal Insert	B	-4	1.5
4/20/4	SG Planiclear	N/A	SG Planitherm Total +	Air	Aluminium Spacer	Thermal Insert	C	-20	1.6
4/20/4	Float	N/A	Pilkington K Glass	Air	SuperSpacer Premium	Thermal Insert	C	-15	1.7

eurologik standard outer frame with standard steel reinforcements

Config	Glass 1 (external)	Glass 2	Glass 3 (internal)	Gas	Spacer bar	Reinforcing	WER	Energy Index	U-value
4/12/4/12/4	SG Planiclear	SG Planitherm Total +	SG Planitherm Total +	Argon	Thermabar	Full Steel	A	7	1.2
4/20/4	SG Diamant	N/A	SG Planitherm Total +	Argon	SuperSpacer Premium	Standard Steel	B	3	1.4
4/20/4	Pilkington Optiwhite	N/A	Pilkington K Glass	Argon	SuperSpacer Premium	Standard Steel	C	-5	1.6
4/20/4	Float	N/A	SG Planitherm Total +	Argon	Aluminium Spacer	Standard Steel	C	-11	1.6
4/20/4	Float	N/A	AGC Planibel Top N	Argon	Thermabar	SStandard Steel	C	-14	1.4

Further configurations available



TECHNICAL INFORMATION

CASEMENT WINDOWS

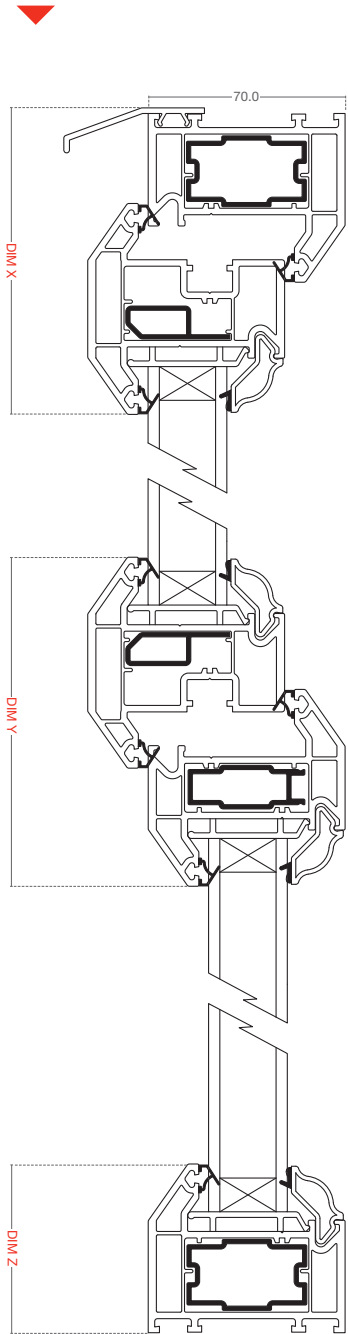
Frame / dimension	Dim X
Thermalogik outer frame (EWS 7001) with sash T (EWS 7005)	97mm
Main frame (EWS 7021) with sash T (EWS 7005)	107mm
Large main frame (EWS 7006) with sash T (EWS 7005)	122mm

Frame / dimension	Dim Y
Sash T (EWS 7005) with transom Z (EWS 7003)	117mm
Sash T (EWS 7005) with intermediate transom Z (EWS 7023)	132mm

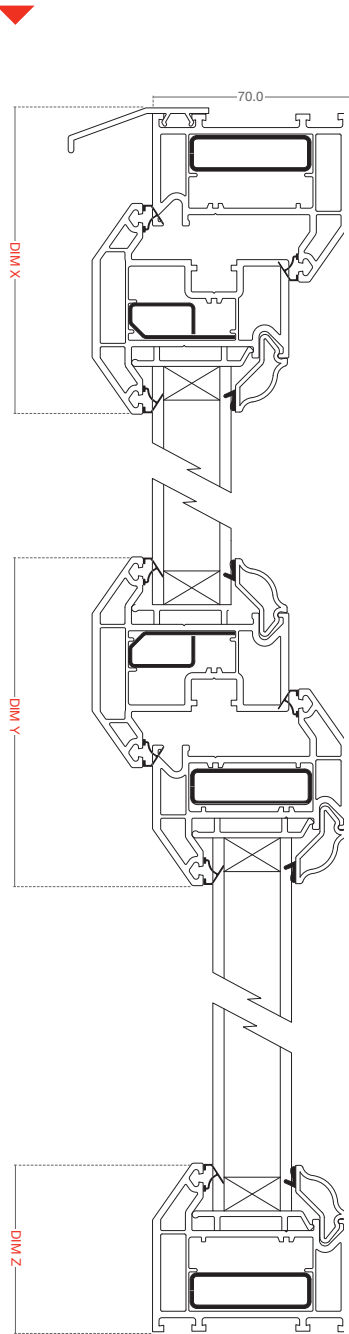
Frame / dimension	Dim Z
Thermalogik outer frame (EWS 7001)	50mm
Main frame (EWS 7021)	60mm
Large main frame (EWS 7006)	75mm

OUTWARD OPENING, INWARD GLAZED

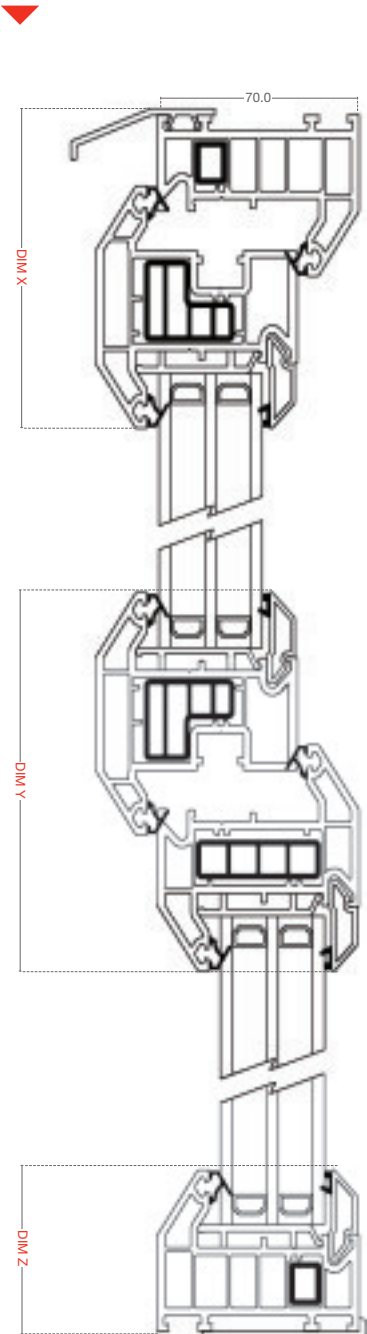
Aluminium
Reinforcement option



Steel
Reinforcement option



PVC-U Thermal Inserts
Reinforcement option





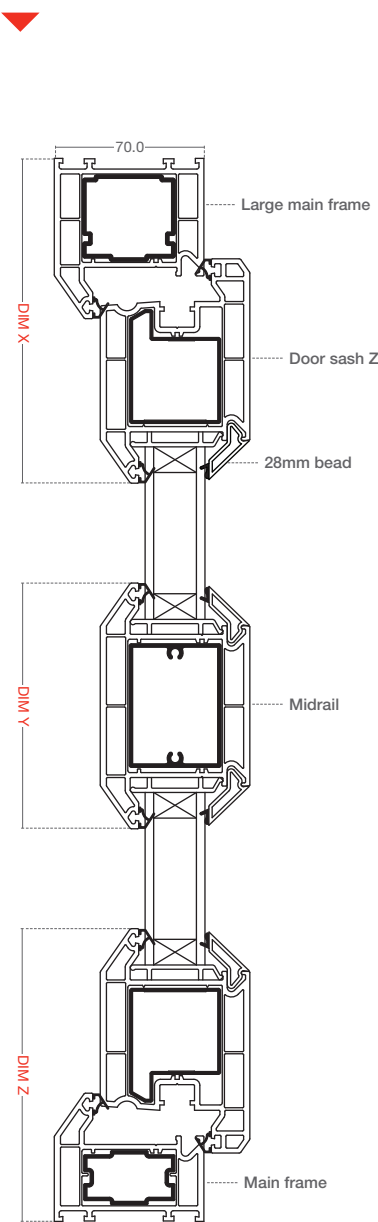
TECHNICAL INFORMATION

RESIDENTIAL DOORS

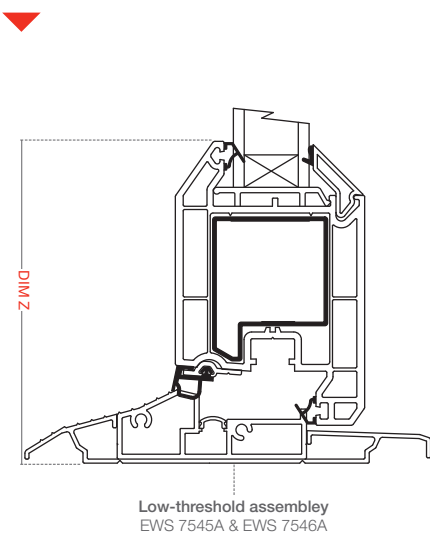
Frame / dimension	Dim X	Frame / dimension	Dim Y	Frame / dimension	Dim Z
Main frame (EWS 7021) with door sash Z (EWS 7018)	137mm	Midrail (EWS 7002)	70mm	Low threshold (EWS 7545A and 7546A)	119mm
Large main frame (EWS 7006) with door sash Z (EWS 7018)	152mm	Midrail (EWS 7022)	85mm	Thermalogik outer frame (EWS 7001)	127mm
		Midrail (EWS 7009)	115mm	Main frame (EWS 7021)	137mm
				Large main frame (EWS 7006)	152mm

INWARD OPENING, INWARD GLAZED

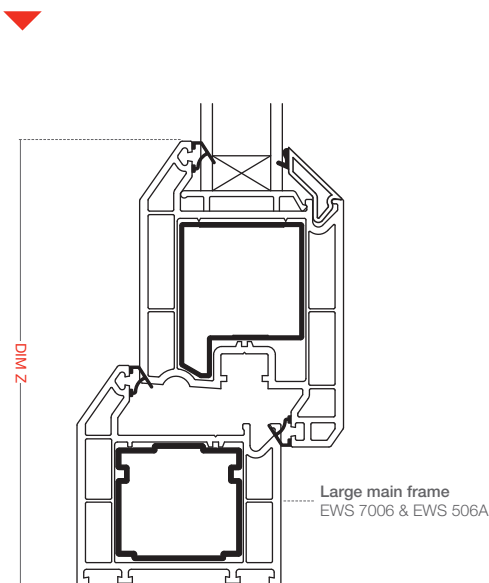
Vertical cross section
With aluminium reinforcing



Low threshold
Threshold option



Large main frame
Threshold option





All together better

MAIN PROFILES

Thermalogik frame
EWS 7001
Reinforcing EWS 800P

Large main frame
EWS 7006

Intermediate transom T
EWS 7022

Tilt and turn
EWS 7007

Main frame
EWS 821P

Sash T
EWS 7005

Transom Z
EWS 7003

Transom T
EWS 7002

CILLS, ANGLES & TRIMS

150mm straight cill joint trim **JT 150**

90° internal angle cill joint trims **JTA 90i**

90°, 135° & 150° angle cill joint trims **JTA 90E, JTA 135 & JTA 150**

85mm A type cill
AS 85

150mm A type cill
AC 150

180mm A type cill
AC 180

85mm cill end caps
ECA 85

150mm-180mm cill end caps
ECA 150 / ECA 180

50mm adjustable angle
AA50

70mm adjustable angle
AA70

Window board retaining trim
EWS 129

Window board trim end cap
EWS 229

Cill extender
EWS 118

Cill reinforcement
CR 27P

ANCILLARIES, BEADS & GASKETS

70mm sq bay post
EWS 120

Sq bay post sculpted
EWS 130

Bay pole
EWS 109

50mm frame extension
EWS 126

25mm frame extension
EWS 106

15mm frame extension
EWS 116

135-150° ext angle capping
EWS 113

Head vent
EWS 135

10mm frame extension
EWS 136

160-170° adjustable bay post external capping
EWS 121

Door drip bar
EWS 102

Butt joint
EWS 103

Bay pole adaptor
EWS 105

Sculpted structural butt joint trim
EWS 128

Bay pole ext trim
EWS 124

Head drip
EWS 101

Bay pole internal trim
EWS 123

Bay pole adaptor
EWS 125

T capping section
EWS 107

Eurogroove cover
EWS 112

Screw cap cover
EWS 155

36mm bead
EWS 7303

36mm ovolo bead
EWS 7313

28mm bead
EWS 7301

28mm ovolo bead
EWS 7312

Ext / int flipper gasket
EWS 7402G

Low threshold
EWS 435G

Mouldings

Drip bar end cap
EWS 204

Interlocking wedges
EWS 7201

Low threshold moulding
EWS 7246

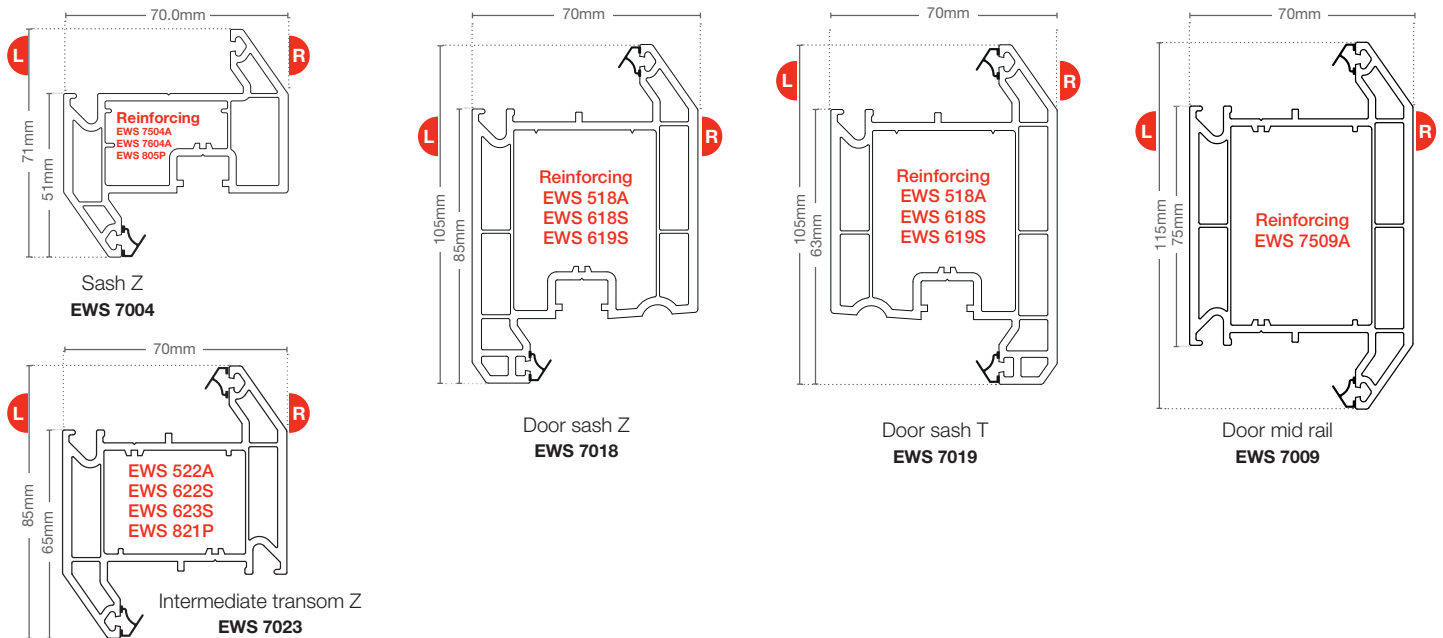
French window end cap
EWS 7215

Clip-in leading ramp
EWS 7202

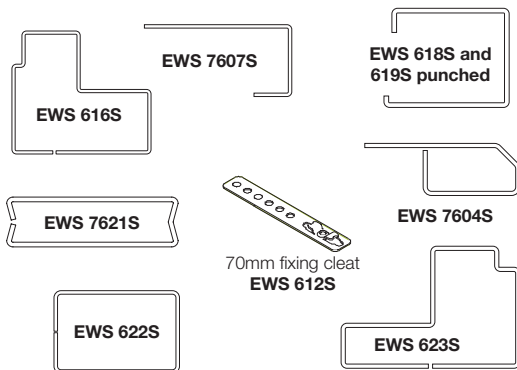
French door end cap
EWS 7205

Clip-in glazing platform
EWS 7203

Chamfered and Ovolo window and door system



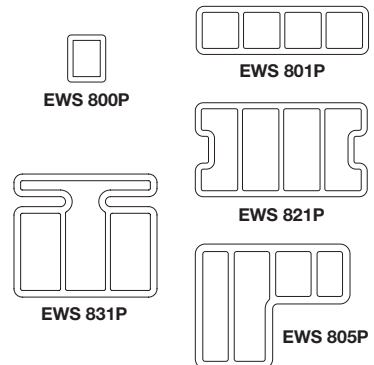
STEEL COMPONENTS



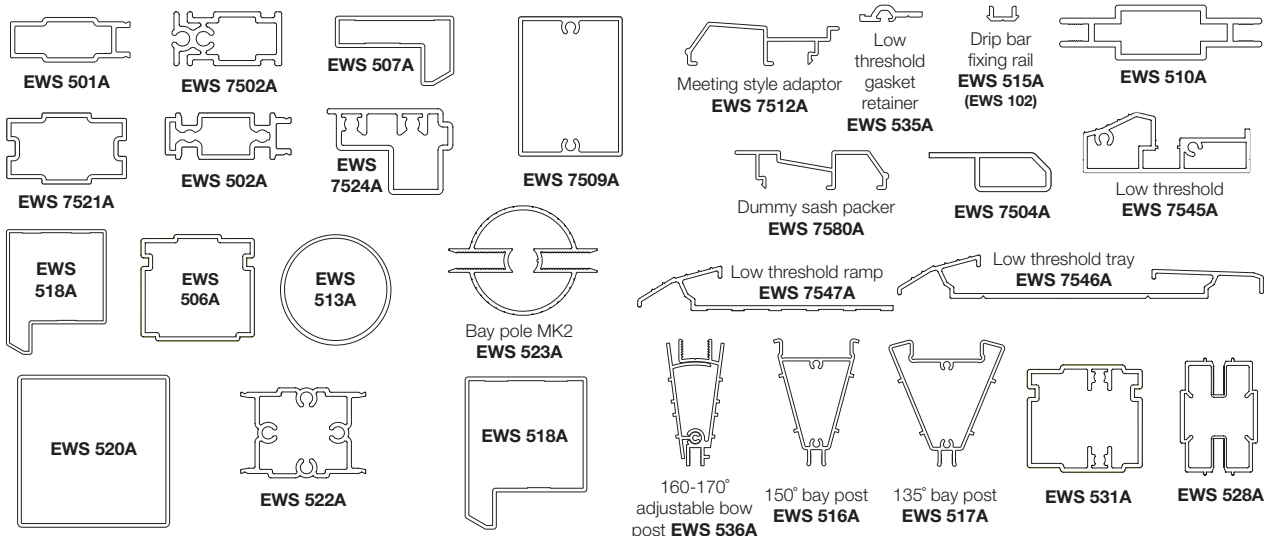
DEC FEATURES



PVC-U THERMAL INSERTS



ALUMINIUM COMPONENTS





T: +44 (0) 116 2289 3343 E: info@facadecreations.co.uk W: www.facadecreations.co.uk

Registered in England, Company Number: 16267073