



FAÇADE CREATIONS



Building Beyond Convention
A New Era of Integrated Construction

Building Beyond Convention: A New Era of Integrated Construction

In today's construction landscape, projects are increasingly complex. Developers face a constant struggle to balance cost, speed, safety, and design ambition. Too often, compromises are made - but at **Façade Creations**, we believe compromise should never be part of the blueprint.

We go beyond simply supplying frames and façades. Our mission is to **integrate structure and envelope into a single engineered solution**, where every element is designed for certainty, resilience, and performance.

By combining advanced light-gauge steel frame (LGSF) technology with precision off-site manufacturing, we create buildings that are not only faster to deliver but also stronger, safer, and more sustainable. From the very first design conversation, our goal is to unlock **certainty, quality, and architectural freedom** - giving you confidence in both delivery and long-term performance.



Building Beyond Convention
Introduction



Building Beyond Convention

The Façade Creations Advantage

The Façade Creations Advantage

We provide end-to-end structural solutions that redefine how buildings are designed and built.

Multi-Storey Mastery

Ambitious projects demand precision. Our pre-panelised LGSF systems allow developments of up to 12 storeys to be delivered with speed and certainty.

- **Rapid installation:** Weeks of construction reduced to days.
- **Cost efficiency:** Lighter structures reduce foundation requirements.
- **Quality assured:** Factory-controlled manufacturing eliminates on-site variables.
- **Design versatility:** Supports a wide range of façades, layouts, and finishes.

Low-Rise Housing Innovation

For housing developments up to three storeys, our steel systems offer an ideal alternative to timber.

- Resilient, non-combustible, and dimensionally stable.
- No risk of shrinkage, rot, or warping.
- Faster completion and earlier occupancy.
- Safer construction with reduced on-site labor requirements.

The Perfect Façade Finish

Our infill walling systems give existing structures a flawless, non-combustible external envelope.

- Provides superior acoustic, fire, and thermal performance.
- Eliminates defects common in wet-trade masonry.
- Enables consistent quality across high-rise projects.
- Lightweight yet durable for long-term performance.

Performance Beyond the Frame

We don't just engineer structures - we engineer performance. Every Façade Creations solution delivers measurable value for the life of the building:

- **Efficiency & Sustainability:** Off-site manufacturing, fewer deliveries, and reduced waste cut carbon footprint and build time.
- **Acoustic & Thermal Comfort:** High-performance insulation and soundproofing designed to meet and exceed regulations.
- **Design Freedom:** Flexible systems accommodate diverse architectural styles, layouts, and material finishes.
- **Durability & Safety:** Fire-tested, robust, and dimensionally stable with lifespans of over 250 years.
- **Predictable Outcomes:** Standardized, tested, and repeatable performance for every project.



Building Beyond Convention

Performance Beyond the Frame

Who We Work With

Collaboration is at the heart of everything we do. We work alongside stakeholders across the construction ecosystem to simplify complexity and deliver shared success.

Our Partners

- **Clients, Developers & Architects:** Bringing vision to reality with performance-driven design.
- **Principal Contractors:** Streamlined coordination, programme certainty, and reduced risk.
- **Sub-Contractors & Specialist Installers:** Training, technical support, and quality assurance.

Sectors We Serve

- **Residential & Housing:** Affordable housing, care homes, assisted living.
- **Multi-Storey Living:** Apartments, hotels, student accommodation.
- **Commercial & Mixed-Use:** Office buildings, retail developments, and large-scale commercial projects.
- **Public Sector:** Healthcare, schools, and community facilities.



Building Beyond Convention

Who We Work With

Modern Methods of Construction (MMC)

We are proud to be at the forefront of the UK's Modern Methods of Construction (MMC) agenda - a government-endorsed approach to improve quality, efficiency, and sustainability across the built environment.

Our MMC Categories

- **Category 2:** Pre-panelised 2D structural systems (LGSF).
- **Category 5:** Non-structural sub-assemblies (infill walls, floors, roofing).

Key Benefits of MMC with Façade Creations

- **Up to 50% faster delivery** compared with traditional methods.
- **Reduced risk** thanks to precision off-site manufacture.
- **Improved safety** with fewer operatives and activities on site.
- **Minimal waste** and reduced carbon emissions.
- **Flexibility** for bespoke design while delivering consistent quality.



Building Beyond Convention

Modern Methods of Construction (MMC)



Technical Excellence

Our systems are engineered to meet the highest standards of performance, safety, and compliance.

Fire Performance

- 60, 90, and 120 minutes of fire resistance achieved.
- Tested to BS and EN standards for complete confidence.
- Non-combustible materials throughout all systems.

Thermal & Acoustic Performance

- U-values that exceed current building regulations.
- Acoustic separation suitable for residential, healthcare, and education sectors.
- Enhanced occupant comfort through reduced noise transfer and consistent temperatures.

Durability & Longevity

- Life expectancy of **250+ years** (SCI verified).
- Resistance to warping, shrinking, and creep.
- Designed for long-term resilience with minimal maintenance.



Building Beyond Convention

Technical Excellence

Low-Rise Housing Systems

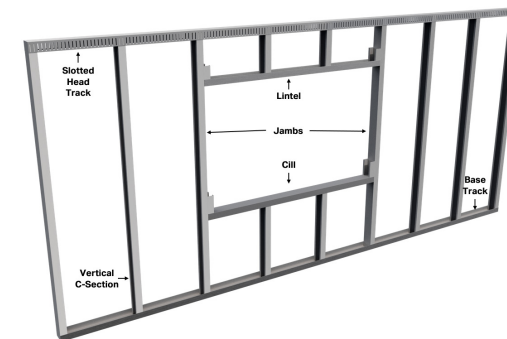
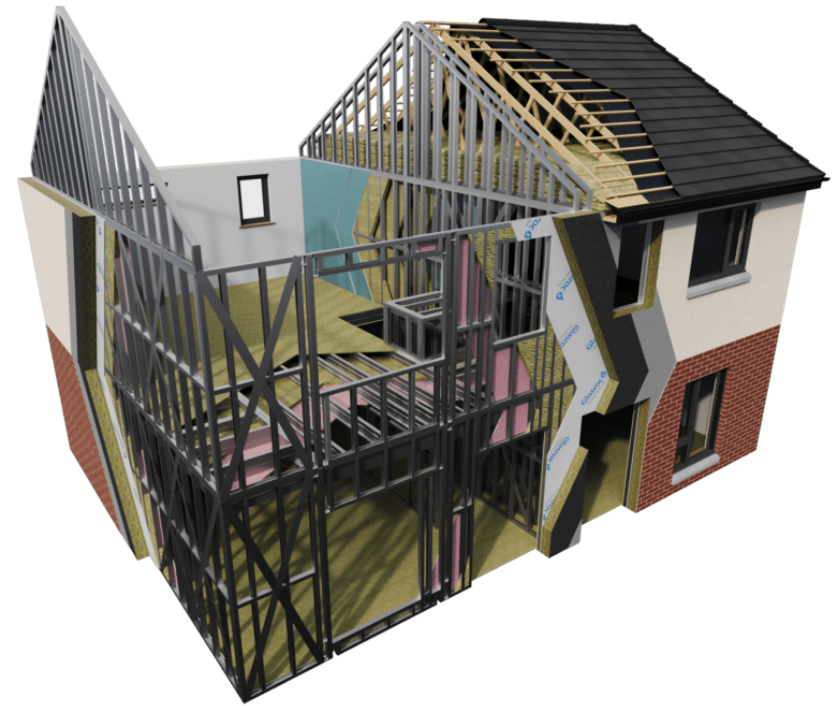
The Façade Creations Low-Rise Housing System delivers speed, quality, and safety for housing up to three storeys.

Benefits:

- 50% faster than traditional builds.
- Reduced embodied carbon and site disruption.
- Fire-tested, durable, and maintenance-free.
- Wide variety of external finishes to meet planning requirements.

Applications:

- Detached, semi-detached, and terraced homes.
- Affordable housing developments.
- Care and assisted living facilities.



Multi-Storey & Commercial Systems

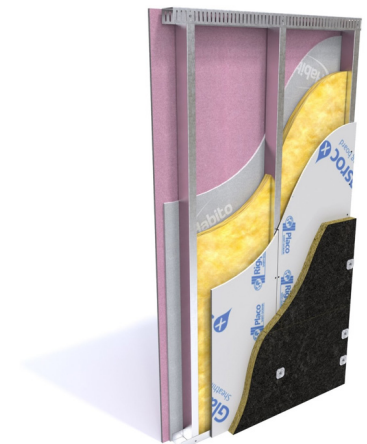
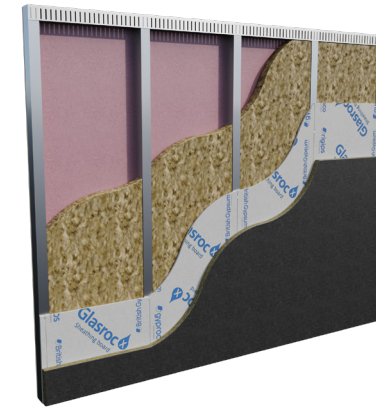
Our multi-storey solutions enable developers to deliver high-quality projects faster and with greater certainty.

Features & Benefits:

- Pre-panelised wall, floor, and roof systems for rapid assembly.
- Composite floor options with superior durability and acoustic performance.
- Lightweight structures up to **70% lighter than concrete**, reducing foundation costs.
- Compatible with cladding, rainscreen, and masonry façades.

Sector Examples:

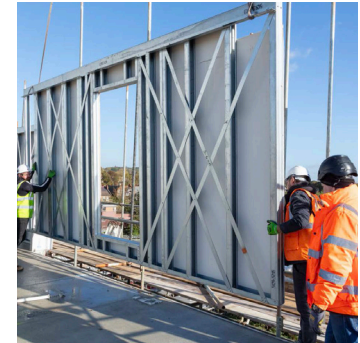
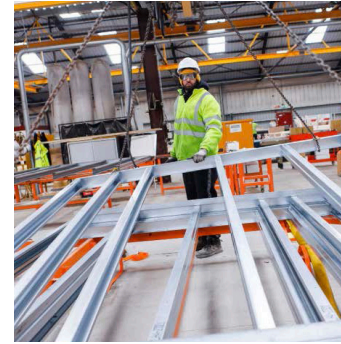
- Apartments & residential towers.
- Student accommodation.
- Hotels & leisure developments.
- Healthcare and education projects.
- Multi-storey office and commercial blocks.



Our Process: From Design to Delivery

We remove uncertainty at every stage of a project, offering a transparent, step-by-step process:

1. **Preparation & Brief:** Feasibility assessments, early design guidance, and cost planning.
2. **Concept Design:** Outline proposals, budget checks, and programme planning.
3. **Technical Design:** Detailed drawings, pre-manufacture design reviews, and approvals.
4. **Manufacture:** Off-site precision fabrication with rigorous quality control.
5. **Installation:** Certified installers, on-site support, and streamlined logistics.
6. **Handover:** Full documentation, warranties, and post-project evaluation.



Building Beyond Convention

Our Process: From Design to Delivery

Sustainability & Future Vision

Sustainability is not an afterthought at Façade Creations. it is **built into the DNA of our systems.**

- **Lower Carbon Footprint:** Reduced transport, waste, and embodied carbon.
- **Circular Economy:** Recyclable materials and waste reduction initiatives.
- **Net-Zero Ready:** Compliance with future building standards and energy-efficiency targets.
- **Health & Wellbeing:** Creating safe, comfortable, and sustainable environments.

Our vision is to create buildings that not only meet today's needs but also contribute positively to the built environment of tomorrow.



Partnership & Support

We believe in more than just construction. We believe in **partnership**.

From concept to completion, we work hand in hand with clients, architects, and contractors to ensure clarity, certainty, and collaboration at every stage.



With Façade Creations, you gain:

- Expert technical support at every design stage.
- Proven, tested systems for guaranteed performance.
- A trusted partner committed to reducing risk and unlocking value.

At the heart of every project, our commitment remains the same:
**to deliver certainty, safety, and sustainability,
with no compromise.**

Contact Façade Creations today.



T: +44 (0) 116 2289 3343 E: info@facadecreations.co.uk W: www.facadecreations.co.uk

Registered in England, Company Number: 16267073